

# SIGNAROAD™

PREMIUM COMPOSITE MATTING



INDUSTRIAL  
MATTING



MILITARY  
FLOORING



EVENT  
FLOORING

MINIMIZES SOIL COMPACTION | ELIMINATES RUTTING | ELIMINATES NEED FOR GRAVEL ROADS | PROTECTS EXISTING VEGETATION | 100% RECYCLABLE

## Create a portable roadway anywhere in the world

Introducing SignaRoad™ – Signature Systems Group’s groundbreaking new matting product designed to create a heavy-duty temporary roadway or pedestrian accessway quickly and easily.

This high-quality 100% virgin HDPE composite matting is strong enough to withstand heavy-haul loads and versatile enough to be used in a myriad of diverse applications.

From temporary roadways for remote utility repair projects to pedestrian accessways for concerts and music festivals, SignaRoad is ready to provide superior temporary access and ground protection with its advanced design features and easy-to-use connection system.

### SignaRoad™ can be used for:

#### ▶ Portable Roadways

Create an instant roadway for vehicles in adverse ground conditions and climates

#### ▶ Ground Protection

Protect valuable turf and sensitive surfaces for events, landscaping, renovation or repair projects

#### ▶ Parking Lots And Staging Areas

Provides a secure and stable (non-shifting) area for staging vehicles and equipment

#### ▶ Pedestrian Pathways and Walkways

Easily create a clean and safe walkway for guests and personnel – virtually anywhere

#### ▶ Working Platforms

Create a solid, stable and hygienic surface for crews and equipment



**SIGNAROAD™ TAKES MATTING TO THE NEXT LEVEL:**

- Virgin HDPE composite material is strong, durable and non-conductive
- Compact size is compatible for vehicle use worldwide
- Unique design: 4-sided overlapping flange offers the ultimate versatility for multiple configurations
- Relatively lightweight for simplified handling and lower transport costs
- Safe for the environment – helps prevent site-to-site contamination

Special Event  
Flooring



Construction  
Matting



All-Weather,  
Heavy-Haul Matting



## SignaRoad™ is Simple to Use – Over and Over Again

SignaRoad™ has been designed to be simple to clean and maintain. It can be used hundreds of times, installed with little to no ground preparation over grass, gravel, sand, soil, concrete, asphalt, ice, snow, mud and other surfaces. This versatile matting ensures reliable access for almost any vehicle.

## Breakthrough Design Features



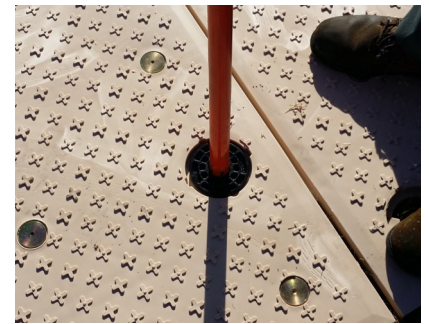
### Virgin HDPE composite construction

Premium long-lasting mats can be used on uneven surfaces and challenging terrain in any climate.



### Overlapping flanges

Speeds up installation and provides additional strength and rigidity to entire work pad. Keeps surface free from mud.



### Cam Lock Connection System

Quick and simple to install. Strongest composite pin on the market.

## SPECIFICATIONS

### Module Size

#### Actual

10ft (L) x 6.83ft (W) x 2.5in (D)  
3m (L) x 2.08m (W) x 6.35cm (D)

### Useable Platform

9.33ft (L) x 6.17ft (W) x 2.5in (D)  
2.84m (L) x 1.88m (W) x 6.35cm (D)

### Useable Roadway

10ft (L) x 6.83ft (W) x 2.5in (D)  
3m (L) x 2.08m (W) x 6.35cm (D)

### Material

High Density Polyethylene Copolymer

### Shipping Info

90 mats per standard 40' shipping container or 53' truck

Pat. Pending

SignaRoad™ is the perfect solution to keep vehicles, equipment and pedestrians safe and dry.

